



# IMAGE TAMPERING

Dr. Aarti Garg, Dr. Sunanda Das, Dr. Hemant Jain

## Introduction

There was a time when photographs were considered to be evidences of a deed, both in print and media. The reliability of photographs, now a days, are in question because of tampering, an easy task to do, courtesy the imaging softwares.

### Case 1

**Iatrogenic ulcerative lesion in buccal mucosa, shown to have disappeared post treatment**

The misconduct in case report was noted during copy editing and the follow up image was found to be morphed.



#### Action taken by Journal

The head of the department (one of the authors) was mailed, he claimed of not reviewing the article before submitting and agreed to the misconduct. Since the report was of a rare iatrogenic lesion, we chose the middle path of presenting it as letter to editor. A note of authors behavior was maintained in the journal database, for future reference.

### Case 2

**An orthodontic device, modified and used in two patients, showing**

The second case lacked the image of the device placed intraorally. The author was then asked to present photographs of this case too. Author mailed the required images, verification of which revealed that it was morphed out of the first case.



#### Action taken by Journal

Being an article on innovation of an existing orthodontic appliance, the second case was removed and the manuscript was re-drafted as a letter to editor. A note of author behavior was made for future reference.

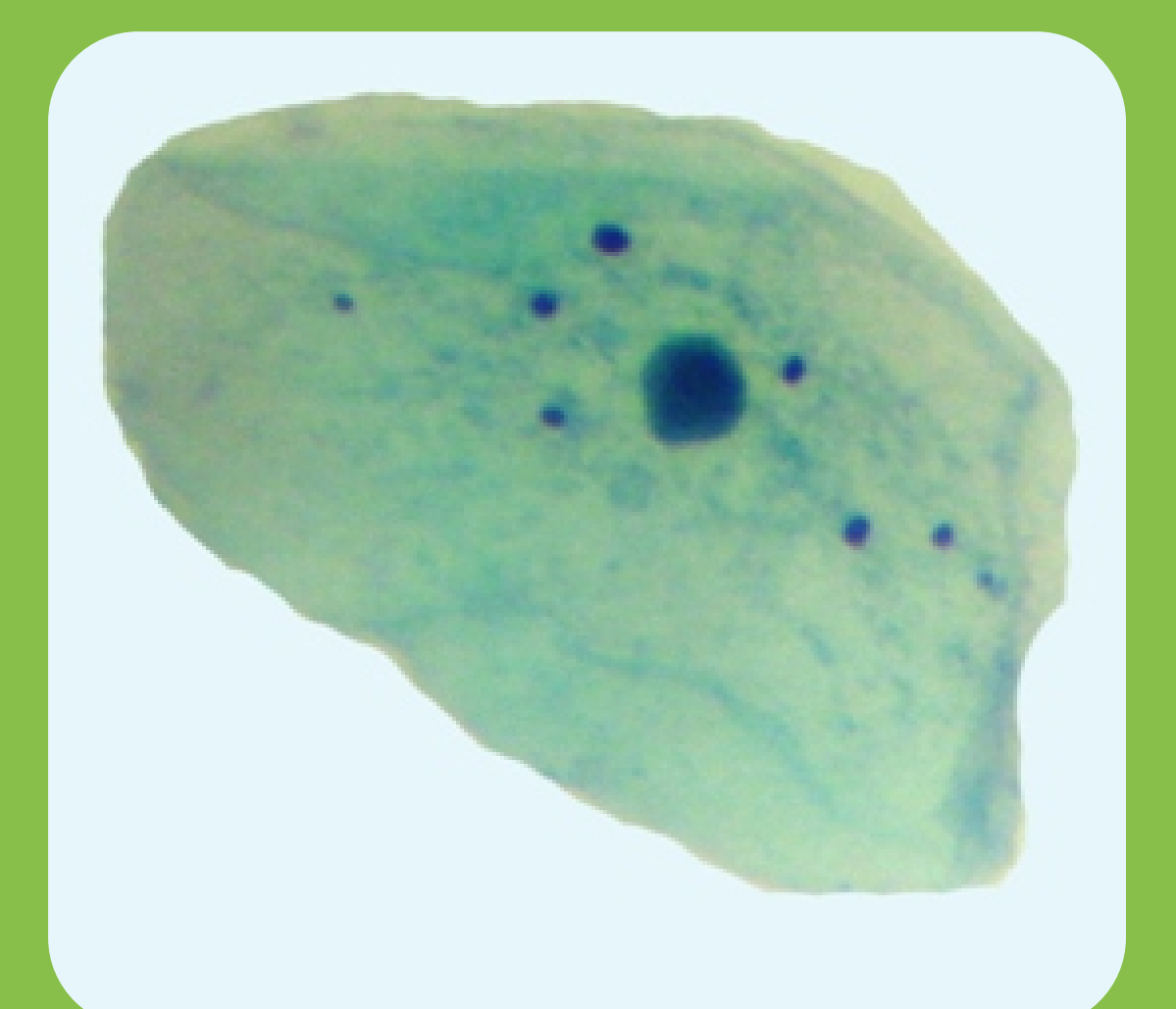
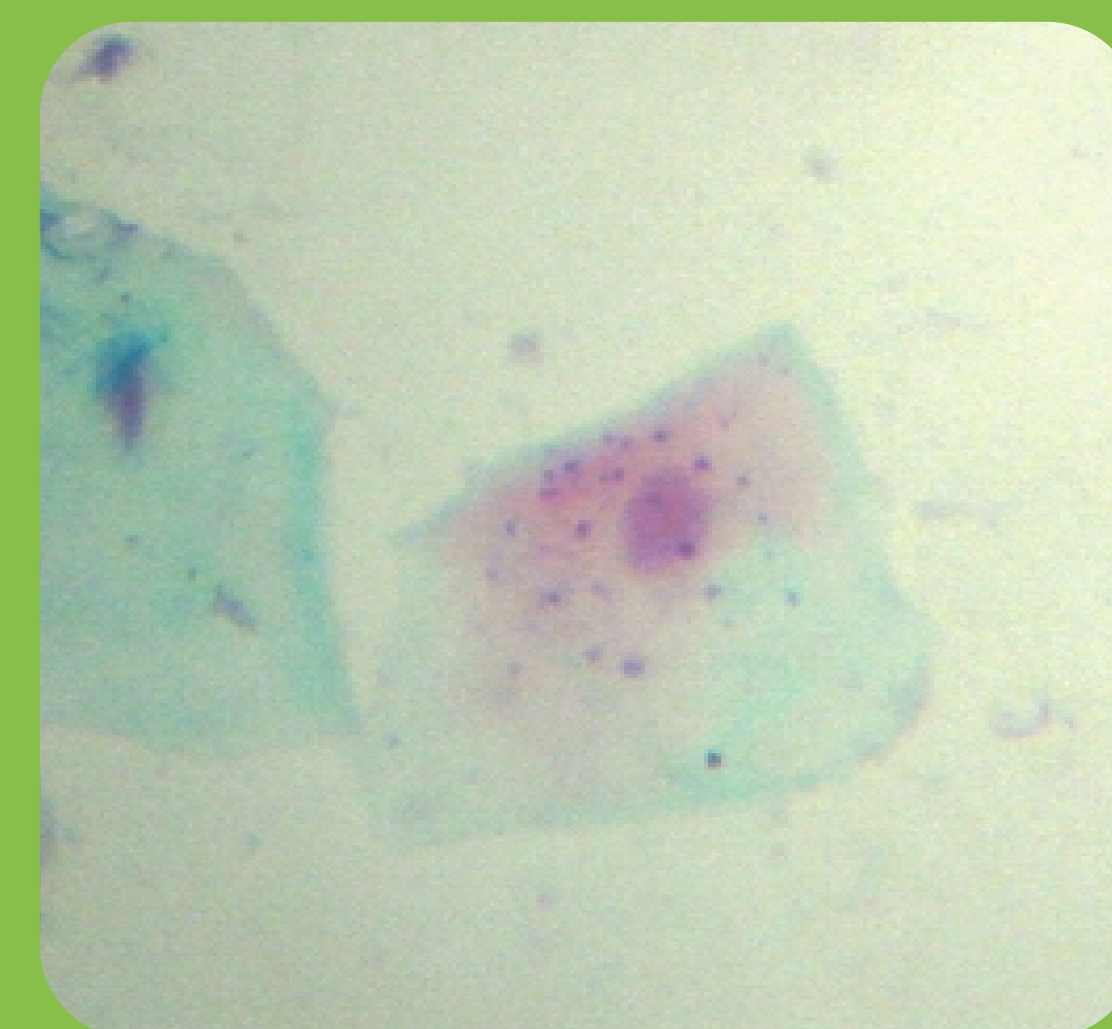
### Case 3

#### Morphed Photomicrograph

Micronucleoli were fabricated to validate the study.

#### Action taken by Journal

This was communicated to the authors, who confessed of the misconduct and the article was then rejected.



## Conclusion

Many image morphing softwares have come up with the idea to 'help' authors in presenting the images in their manuscripts. But, ironically, these softwares were 'used' to morph images to present favourable results. Journal and publisher should embrace such tools as they can be used to 'detect' morphing.