

# Detection of Dental Pathologies in Routine Paranasal CT Scans: A Retrospective Study

ERDOGAN BULBUL<sup>1</sup>, BAHAR YANIK<sup>2</sup>, GULEN DEMIRPOLAT<sup>3</sup>

## ABSTRACT

**Introduction:** Multidetector Computed Tomography (MDCT) is a widespread method for evaluating paranasal sinuses and nasal cavity in daily practice. The maxillary teeth are in field of view in a paranasal sinus CT scan and it is possible to detect dental pathologies with CT.

**Aim:** To determine the incidence of maxillary teeth pathologies in routine paranasal sinus CT scans.

**Materials and Methods:** A retrospective study was conducted. Consecutive 395 paranasal sinus CT scans were evaluated. All CT images were obtained with a 64 detector-CT. Patients with previous facial trauma, operation, invasive tumors and repeated exams were excluded. Detected findings were classified as "tooth loss, dental restorations or procedures and dental pathologies (carious lesions, dental developmental anomalies,

periapical lesions and periodontal diseases). The proportion of findings was reported as simple percentiles.

**Results:** Three hundred and eighty-four CT scans were included in the study. Dental restorations or procedures were determined in 129 (33.5%) patients. A total of 34 (8.8%) patients had normal teeth count and morphology. A total of 264 (64.3%) patients had at least one tooth loss. A total of 195 (51%) patients had at least one or more dental pathology. Number of dental carious lesions, dental developmental anomalies, periapical lesions and periodontal disease were 104 (27.0%), 78 (14.3%), 46 (11.9%), 44 (11.4%), respectively.

**Conclusion:** Dental pathologies were encountered in more than half of the patients. Detecting dental pathologies may prevent tooth loss and improve oral health. The radiologist should keep in mind dental pathologies while evaluating paranasal sinus CT in daily practice.

**Keywords:** Maxillary, Oral health, Periodontal disease, Radiology, Tooth decay

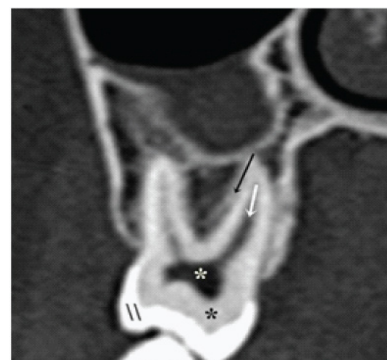
## INTRODUCTION

Dental pathologies cause disruption of oral health, may be a causative factor for maxillary sinusitis and also may be related with systemic diseases like cardiovascular diseases, osteoporosis, gastrointestinal malignancies etc., [1-3]. Moreover, early diagnosis and treatment is important to prevent tooth loss or other complications.

Multidetector Computed Tomography (MDCT) is a widespread method for evaluating paranasal sinuses and nasal cavity in daily practice [4,5]. Axial, sagittal and coronal reformatted images in soft tissue and bone algorithm enable to determine both soft tissue and bone pathologies [4]. In a paranasal sinus CT scan, the whole of the maxillary molar teeth are frequently visible. Anteriorly located maxillary teeth are often partially included in the images [6].

There are 16 teeth in each arch (maxilla and mandible) and they are composed of multiple components [Table/Fig-1]. Crown is covered by enamel which is highly opaque. Dentin and cementum cannot be distinguished by CT. Dentin surrounds the root canal and pulp chamber. Pulp chamber and root canal are most hypodense structures in teeth and contains neurovascular elements [7]. Periodontal ligament is seen as a thin radiolucent layer between the root surface and lamina dura. Teeth are situated in the alveolar process [3]. Teeth have proximal, lingual, occlusal and buccal surfaces.

It is possible to detect dental pathologies with MDCT before they cause symptoms [6]. However, radiologists sometimes do not care enough to evaluate teeth and related pathologies [6,8]. Therefore, this study was conducted to review the pathologies of Maxillary Alveolar Arcus (MAA) in paranasal sinus CT scans and to determine the incidence of dental pathologies and reveal the clinically important ones.



**[Table/Fig-1]:** Coronal CT image shows the normal second maxillary molar tooth. The enamel (//) has the highest density and covers the crown. Dentin and cementum (black \*) cannot be differentiated with CT. Pulp chamber (white \*) and root canal (white arrow) have the lowest density. The periodontal ligament space (black arrow) is a thin hypodense layer around the cementum.

## MATERIALS AND METHODS

A retrospective study was performed in Radiology Department of Balikesir University, Training and Education Hospital, Turkey between December 2014 to June 2015 and consecutive 395 paranasal sinus CT scans were retrospectively evaluated. Patients admitted to outpatient department of hospital for nasal or paranasal sinus problems were included. The CT scans of seven patients with previous facial trauma, operation or invasive tumor history and four patients with repeated exams were excluded. The consent for ethical approval was obtained from the local Ethical Committee before the commencement of study.

All CT images were obtained with 64 detector-scanner (Toshiba

Aquillon 64, Otawara, Japan). Axial CT scans obtained from frontal sinus apex to the end of hard palate without contrast administration. Technical parameters were as informed; slice thickness 0.5 mm, spacing 0.3 mm, tube voltage 120 kv, miliampere 150 mA. Average number of slices was 300-350. Sagittal and coronal images in bone algorithm were constituted in workstation (Aquarius Intuition edition ver4.4.7, TeraRecon, CA, USA) in addition to axial images. Window width and window level values were changed to 3500 and 1500HU if necessary, because teeth could be more apparently visualised by changing window width and level values.

All visible parts of maxillary teeth were checked, beginning from the incisors to third molars in the right and left sides, respectively. Firstly, the existence of tooth loss, developmental dental anomalies, dental procedures or instrumentation was evaluated. Then the visible parts of each maxillary tooth (crown, dentin, pulp and roots) were examined for pathologies. Only the roots of incisors could be seen. The visible parts of teeth were gradually increased from anterior to posterior and the whole of molar teeth were evaluated. Bony structure of MAA was also checked for periodontal and periapical diseases.

Detected findings were classified as "tooth loss, dental restorations or procedures and dental pathologies (carious lesions, dental developmental anomalies, periapical lesions and periodontal diseases)". Radiologic criteria used for classifying dental pathologies were modified according to Textbook of Oral Radiology: Principles and Interpretation, 6<sup>th</sup> edition by White and Pharaoh [9].

## STATISTICAL ANALYSIS

Statistical test applied were in simple percentiles.

## RESULTS

Paranasal sinus MDCT scans of 384 patients were included in our study. Two hundred and twenty seven (59%) patients were male, 157 (41%) of them were female. Average age was 45 years old (between 12 and 90). One hundred and ninety five (51%) patients had one or more dental pathologies. Dental restorations or procedures were determined in 129 (33.5%) patients. Thirty four (8.8%) patients had normal teeth count and morphology. Two hundred and sixty four (68.75%) patients had at least one tooth loss.

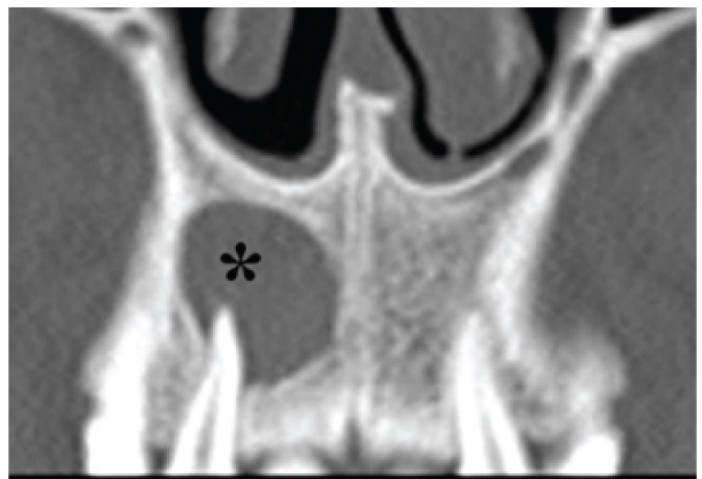
Periapical lesions and periodontal disease were detected in 46 (11.9%) and 44 (11.4%) patients, respectively [Table/Fig-2-4].

Cariou lesions were the most common dental pathology. One hundred and forty six carious lesions were detected in 104 (27%) patients out of which 64 were proximal caries [Table/Fig-5]. Nineteen carious lesions were in buccal surface, 32 in occlusal surface and four in lingual surface. Twenty seven extensive carious lesions were also seen [Table/Fig-6].

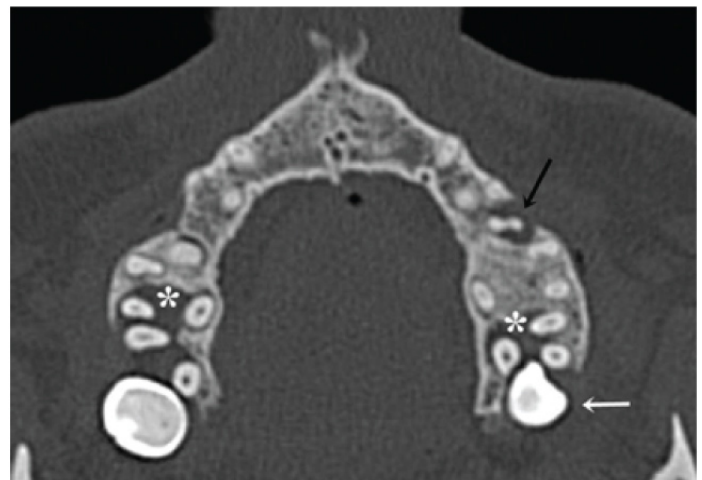
In addition residual tooth root were detected in 19 (4.9%) patients. Ninety-three dental developmental anomalies were detected in 78 (20%) patients. The most common dental developmental anomaly was impacted molar teeth. Thirty eight impacted molar teeth were seen in 31 (8%) patients. Twenty five premolar and molar teeth with single root, 15 molar teeth root protrusion to maxillary sinus floor, four impacted canine, seven mesiodens, three residual deciduous teeth and one four-rooted molar tooth were the other developmental anomalies [Table/Fig-7,8].

Incidental pathology	n	%
Cariou lesions	104	27.0
Developmental anomalies	78	20.3
Periapical lesions	46	11.9
Periodontal disease	44	11.4

[Table/Fig-2]: The ratio of 272 incidental pathologies in maxillary teeth on 384 patients MDCT scans.



[Table/Fig-3]: Coronal CT image demonstrates a well-defined periapical lucent lesion (black \*) surrounding the root of second maxillary incisor.



[Table/Fig-4]: Axial CT image shows the periodontal ligament space enlargement and bone resorption between root furcation around the left premolar (black arrow) and bilateral second molar teeth (white \*). The left third molar tooth was (white arrow) impacted.



[Table/Fig-5]: Sagittal oblique CT image demonstrates proximal caries (black arrows) between the 2<sup>nd</sup> and 3<sup>rd</sup> molar teeth. Soft tissue density is seen (white \*) in the maxillary sinus.

## DISCUSSION

Dental pathologies in the maxillary teeth and MAA were detected in more than half of the patients with paranasal sinus CT scans in our study. Many previous studies about incidental findings of maxillofacial region reported in literature [10-15]. The incidental findings at the airways area, temporomandibular joints, soft tissues, paranasal sinuses and teeth were investigated in these studies. Most of them were based on Cone-Beam CT (CBCT) findings. Moreover, in some studies patients were referred to CBCT for dental implications. Our

Type	n	%
Proximal caries	64	41.8
Occlusal surface caries	32	20.9
Buccal surface caries	19	12.5
Lingual surface caries	4	2.6
Extensive caries	27	17.6
Total	146	100

**[Table/Fig-6]:** Carious lesion types detected in the study.

Anomalies	n	%
Impacted molar tooth	38	40.9
Premolar or molar tooth with single root	25	26.9
Molar tooth root protrusion into maxillary sinus floor	15	16.1
Mesiodens	7	7.4
Impacted canine	4	4.3
Retained deciduous tooth	3	3.2
Four-rooted molar tooth	1	1.1
Total	93	100

**[Table/Fig-7]:** Dental developmental anomalies detected in the study.

study is different from these studies by some ways. In our study all patients were referred for upper nasal airway and paranasal sinus pathologies evaluation. We focused on the dental pathologies and did not evaluate other regions. In a recent study reported by Steinklein J and Nguyen V et al., dental pathologies encountered on head and neck CT scans were described [15]. However, they did not mention about the incidence of dental pathologies. We could not find a study reporting the incidence of dental pathologies in paranasal sinus CT scans. Dental pathologies were observed in 195 (51%) patients in our study.

A carious lesion is demineralization of dental hard tissues. Bacteria produce lactic acid via carbohydrate fermentation which is responsible for demineralization [16]. It may take long time before caries penetrate the enamel, however, it may spread rapidly in the dentin [6]. Caries may destroy the whole tooth with progression. It is one of most prevalent disease and can be detected by CT [6,15]. A total of 153 carious lesions were detected in 104 (27%) patients in this study. An early carious lesion may be seen in a mushroom shape and an advanced one is ovoid in CT [6]. Dental carious lesions are classified according to localization: occlusal, proximal, lingual and buccal [9]. An early carious lesion which is limited into the enamel usually requires only an interceptive treatment. However, in an advanced carious lesion, the surface is cavitated and a restoration is required [9]. In our study, considerable amount of the dental caries were detected at the proximal surfaces which may be difficult to visualise by physical examination [17]. Incidentally detection of caries at an early stage with paranasal sinus CT may prevent caries progression and tooth loss with appropriate treatment.

Periodontal disease is a common cause of teeth loss [18]. The inflammatory changes in the surrounding soft tissue and bone around the teeth cause destruction of periodontal ligament. The bone loss occurs between the teeth and furcation of the teeth [9]. Decreasing density at the intercrestal bone and widening of the periodontal ligament space can be detected by CT [4]. The periodontal ligament space is normally thin and its width is approximately 0.2 mm or less in CT images [19]. These findings may be evident in severe disease but they are non-specific findings. So, a clinical examination may be advised if periodontal ligament space widening is detected and periodontal disease is suspected in CT [9]. In 44 (11.4%) patients, periodontal disease was suspected with CT findings in our study, however, clinical examination was not performed.

Pulp infections may cause periapical granuloma, cyst or abscess [20]. Periapical lesions were detected in 46 (11.9%) patients and



**[Table/Fig-8]:** Axial CT image shows a mesiodens (white arrow) posterior to the left maxillary incisor teeth. The apex of the mesiodens is between first incisor teeth.

were seen as a lucent lesion around the root apex having similar appearance in CT scans [6,20]. Granulomas are generally smaller than cysts, have ill-defined borders and higher attenuation values in CT [21]. Cysts are usually smaller than 1 cm diameter, well-defined and sclerotic borders [22]. It may not be clinically important to differentiate a small cyst and granuloma. However, cysts may increase in size and cause complications like displacement of roots, resorption of bone and roots and maxillary sinusitis [20]. Ill-defined lucent area with inflammatory changes at the tooth root, surrounding bone and soft tissues in MDCT with clinical findings like pain, facial swelling and fever suggests an abscess [6]. Appropriate treatment and radiological follow-up may be indicated in periapical lesions [23]. Therefore, it may be beneficial to report the periapical lesions which were incidentally detected with paranasal sinus CT.

Developmental dental anomaly is not rare [24]. Developmental dental anomalies were detected in 78 (20%) patients in this study. Tooth impaction is a frequent condition and it is usually detected in the third molars [24]. Impacted canine is second. It is not recommended to extract impacted tooth unless that cause a complication. But impacted teeth can have caries, periodontal bone loss, cyst and tumors. Regular oral examination is recommended to keep asymptomatic impacted third molars in good health [24]. In our study, 31 (8%) patients over 30-years old had impacted third molars. Additionally, four patients (1%) had impacted canines. A mesiodens is a supernumerary tooth located in the incisor region and prevalence is reported between 0.3% and 2.2% [25]. It has usually a conical shape and located inversely in CT [26]. The mesiodens can delay eruption of central incisors; rarely causes root resorption and vitality loss. It is not a rule to extract an incidentally diagnosed mesiodens, however, surgical intervention may be considered to prevent complications like cystic bone changes, root resorption or eruption disturbance of adjacent teeth [9,25]. In our study, mesiodens were detected in 7 (1.82%) patients but there was no sign of complications.

The root and canal number in teeth may vary [27]. These variations can be detected with CBCT and MDCT [28]. Twenty five molar or premolar teeth with single root and one molar tooth with four roots were detected in our study. Identifying the root and canal variations make contribution to choosing the treatment method in endodontic treatment and improve the success [27]. Determining and reporting the canal and root variations incidentally in paranasal sinus MDCT scan may be helpful during management of the affected tooth if that needs treatment.

MDCT is capable of depicting dental pathologies by multiplanar images and thin sections [15]. Also, oblique planar images, three dimensional surface-rendered images and reconstructed dental panoramic images can be obtained by advanced software in bone and soft tissue algorithms which may be helpful for detailed

information [6]. MDCT has a capability to detect various dental pathologies like carious lesions, periodontal disease, periapical lesions, cysts, tumors etc. [6,15]. However, MDCT has limitations for dental implications like higher radiation dose and cost [9]. CBCT is a newer and alternative three-dimensional imaging method in dentistry. The lower cost and radiation exposure compared to MDCT are advantages of CBCT [9,13,29]. On the other hand CBCT has limitations like the lack of a soft tissue window and precise Hounsfield units and higher image noise [30,31].

## LIMITATION

Mandibular teeth were not included in the paranasal sinus MDCT so we were not able to collect data of mandibular teeth. Our study was retrospective and we could not perform a dental examination, so we were not able to correlate MDCT findings with clinical findings. Additionally, ratio of dental pathologies may probably change according to socio-economic development of countries. If this study was performed in a developed Eastern country, less dental pathologies could be found.

## CONCLUSION

Dental pathologies such as carious, periapical, periodontal and developmental lesions were encountered in more than half of the patients with paranasal sinus MDCT in this study. Detecting dental pathologies with paranasal sinus CT may prevent tooth loss and improve oral health. The radiologist should keep in mind dental pathologies while evaluating the paranasal sinus CT scans.

## REFERENCES

- [1] Kuan EC, Suh JD. Systemic and odontogenic etiologies in chronic rhinosinusitis. *Otolaryngol Clin North Am.* 2017;50:95-111.
- [2] Ansai T, Takata Y, Yoshida A, Soh I, Awano S, Hamasaki T, et al. Association between tooth loss and orodigestive cancer mortality in an 80-year-old community-dwelling Japanese population: a 12-year prospective study. *BMC Public Health.* 2013;13:814.
- [3] Merchant AT, Virani SS. Evaluating periodontal treatment to prevent cardiovascular disease: challenges and possible solutions. *Curr Atheroscler Rep.* 2017;19(1):4.
- [4] Fatterpekar GM, Delman BN, Som PM. Imaging the paranasal sinuses: where we are and where we are going. *Anat Rec (Hoboken).* 2008;291:1564-72.
- [5] Lam S, Bux S, Kumar G, Ng Kh, Hussain A. A comparison between low-dose and standard-dose non-contrast multidetector CT scanning of the paranasal sinuses. *Biomed Imaging Interv J.* 2009;5:e13.
- [6] Scheinfeld MH, Shifteh K, Avery LL, Dym H, Dym RJ. Teeth: what radiologists should know. *Radiographics.* 2012;32:1927-44.
- [7] Boeddinghaus R, Whyte A. Dental panoramic tomography: an approach for the general radiologist. *Australas Radiol.* 2006;50:526-33.
- [8] Longhini AB, Ferguson BJ. Clinical aspects of odontogenic maxillary sinusitis: a case series. *Int Forum Allergy Rhinol.* 2011;1:409-15.
- [9] White SC, Proah MJ. *Oral Radiology Principles and Interpretation.* 6<sup>th</sup> ed St Louis: Mosby, 2009.
- [10] Çağlayan F, Tozoğlu U. Incidental findings in the maxillofacial region detected by cone beam CT. *Diagn Interv Radiol.* 2012;18:159-63.
- [11] Price JB, Thaw KL, Tyndall DA, Ludlow JB, Padilla RJ. Incidental findings from cone beam computed tomography of the maxillofacial region: a descriptive retrospective study. *Clin Oral Implants Res.* 2012;23:1261-68.
- [12] Allareddy V, Vincent SD, Hellstein JW, Qian F, Smoker WR, Ruprecht A, et al. Incidental findings on cone beam computed tomography images. *Int J Dent.* 2012;2012:871532.
- [13] Cha JY, Mah J, Sinclair P. Incidental findings in the maxillofacial area with 3-dimensional cone-beam imaging. *Am J Orthod Dentofacial Orthop.* 2007;132:7-14.
- [14] Edwards R, Alsufyani N, Heo G, Flores-Mir C. The frequency and nature of incidental findings in large-field cone beam computed tomography scans of an orthodontic sample. *Prog Orthod.* 2014;15:37.
- [15] Steinklein J, Nguyen V. Dental anatomy and pathology encountered on routine CT of the head and neck. *AJR Am J Roentgenol.* 2013;201:843-53.
- [16] O'Mullane DM, Baez RJ, Jones S, Lennon MA, Petersen PE, Rugg-Gunn AJ, et al. Fluoride and oral health. *Community Dental Health.* 2016;33:69-99.
- [17] Braga MM, Mendes FM, Ekstrand KR. Detection activity assessment and diagnosis of dental caries lesions. *Dent Clin North Am.* 2010;54:479-93.
- [18] Jiang Y, Okoro CA, Oh J, Fuller DL. Sociodemographic and health-related risk factors associated with tooth loss among adults in Rhode Island. *Prev Chronic Dis.* 2013;10:E45.
- [19] Angelopoulos C, Scarfe WC, Farman AG. A comparison of maxillofacial CBCT and medical CT. *Atlas Oral Maxillofac Surg Clin North Am.* 2012;20:1-17.
- [20] Chapman MN, Nadgir RN, Akman AS, Saito N, Sekiya K, Kaneda T, et al. Periapical lucency around the tooth: radiologic evaluation and differential diagnosis. *Radiographics.* 2013;33:15-32.
- [21] Aggarwal V, Logani A, Shah N. The evaluation of computed tomography scans and ultrasounds in the differential diagnosis of periapical lesions. *J Endod.* 2008;34:1312-15.
- [22] Yoshiura K, Weber AL, Runnels S, Scrivani SJ. Cystic lesions of the mandible and maxilla. *Neuroimaging Clin N Am.* 2003;13:485-94.
- [23] Fernandes M, Ataide I. Nonsurgical management of periapical lesions. *J Conserv Dent.* 2010;13:240-45.
- [24] Santosh P. Impacted third molars: review of literature and a proposal of a combined clinical and radiological classification. *Ann Med Health Sci Res.* 2015;5:229-34.
- [25] Gündüz K, Celenk P, Zengin Z, Sümer P. Mesiodens: a radiographic study in children. *J Oral Sci.* 2008;50:287-91.
- [26] Lee DH, Lee JS, Yoon SJ, Kang BC. Three dimensional evaluation of impacted mesiodens using dental cone beam CT. *Korean J Oral Maxillofac Radiol.* 2010;40:109-14.
- [27] Mohammadi Z, Shalavi S, Jafarzadeh H. Extra roots and root canals in premolar and molar teeth: review of an endodontic challenge. *J Contemp Dent Pract.* 2013;14:980-86.
- [28] Mao T, Neelakantan P. Three-dimensional imaging modalities in endodontics. *Imaging Sci Dent.* 2014;44:177-83.
- [29] Aljehani YA. Diagnostic Applications of Cone-Beam CT for Periodontal Diseases. *Int J Dent.* 2014;2014:865079.
- [30] Kiljunen T, Kaasalainen T, Suomalainen A, Kortensniemi M. Dental cone beam CT: A review. *Phys Med.* 2015;31:844-60.
- [31] White SC. Cone-beam imaging in dentistry. *Health Phys.* 2008;95:628-37.

### PARTICULARS OF CONTRIBUTORS:

1. Assistant Professor, Department of Radiology, Faculty of Medicine, Balikesir University, Turkey.
2. Professor, Department of Radiology, Faculty of Medicine, Balikesir University, Turkey.
3. Associate Professor, Department of Radiology, Faculty of Medicine, Balikesir University, Turkey.

### NAME, ADDRESS, E-MAIL ID OF THE CORRESPONDING AUTHOR:

Dr. Erdogan Bulbul,  
Assistant Professor, Department of Radiology, Faculty of Medicine,  
Çağış Campus (Bigadiç Road 17<sup>th</sup> km), Balikesir University, Turkey.  
E-mail: drerdoganbulbul@yahoo.com

FINANCIAL OR OTHER COMPETING INTERESTS: None.

Date of Submission: **Feb 13, 2017**

Date of Peer Review: **Mar 30, 2017**

Date of Acceptance: **Apr 26, 2017**

Date of Publishing: **Jul 01, 2017**